

# *The* TRUST

The Alaska Mental Health Trust Authority

## **Overview of the Trust Land Office**

---

Presented by Tracey Ricker  
December 5, 2013

# THE LOST ALASKANS



One of the women's ward



One of the men's ward

MORNINGSIDE HOSPITAL 1935

## ALASKA MENTAL HEALTH TRUST AUTHORITY

The Trust Authority administers the mental health trust to improve the lives of beneficiaries. Trustees have a fiduciary responsibility to protect and enhance Trust assets in perpetuity for beneficiaries. The Trust provides leadership in advocacy, planning, implementing and funding of a Comprehensive Integrated Mental Health Program and acts as a catalyst for change.

# TRUST BENEFICIARIES

---

- ❖ People with mental illness
- ❖ People with developmental disabilities
- ❖ People with chronic alcoholism and other substance related disorders
- ❖ People with Alzheimer's disease and related dementia
- ❖ People with traumatic brain injuries

# BOARD OF TRUSTEES

---



Mary Jane Michael  
Paula Easley      Dr. William Doolittle

Larry Norene  
Laraine Derr

Russ Webb  
Michael Barton

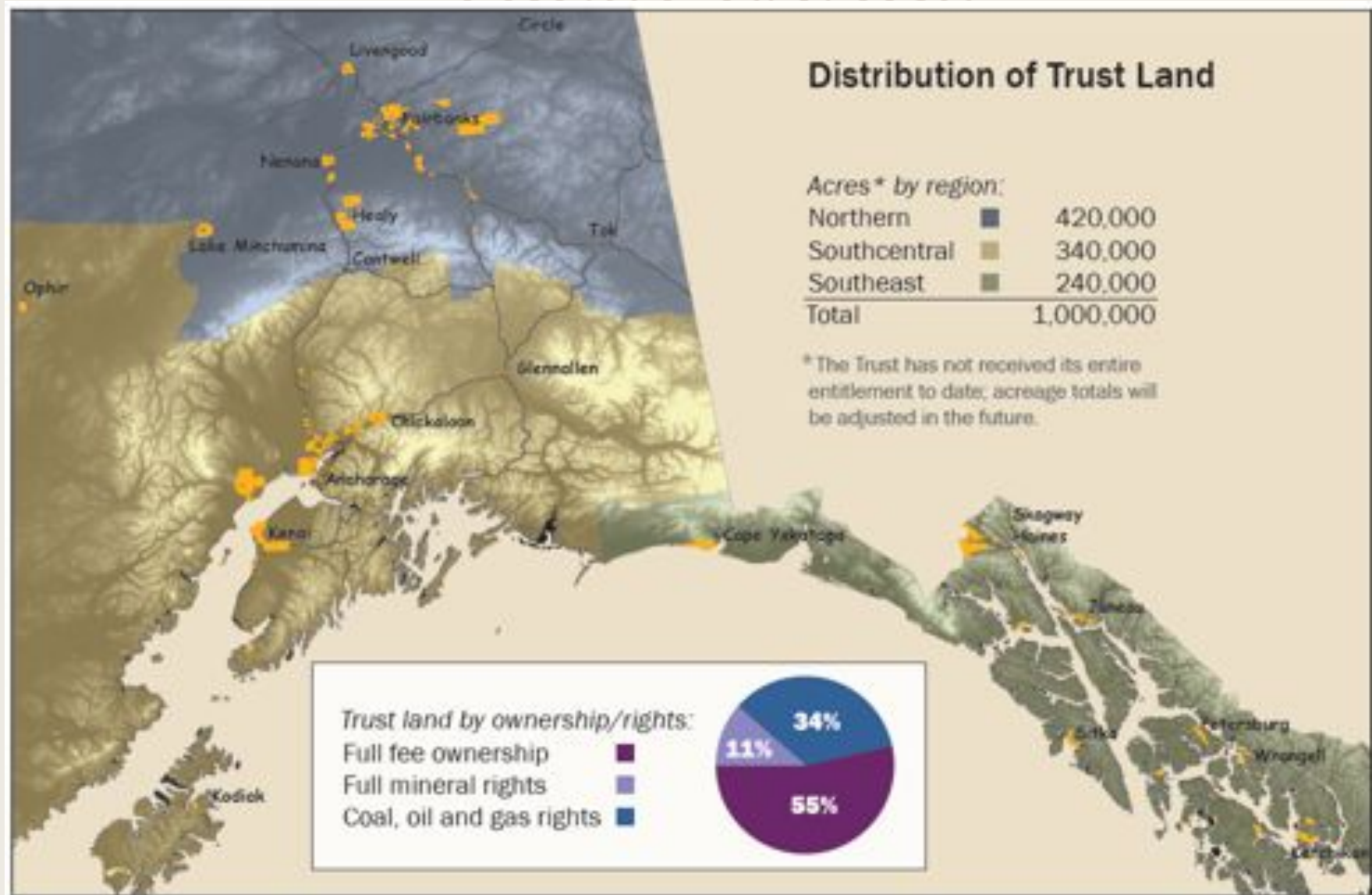
# TRUST LAND OFFICE

---

- ❖ Management of The Trust land and resources for the best interest of the Trust and its Beneficiaries.
- ❖ Focus:
  - ❖ Protect and enhance the long-term productivity of Trust Land;
  - ❖ Maximize long-term revenue from Trust Land;
  - ❖ Encourage a diversity of revenue-producing uses of Trust Land; and
  - ❖ Manage Trust Land prudently, efficiently and with accountability to the Trust and its beneficiaries.

[www.mhtrustland.org/](http://www.mhtrustland.org/)

# TRUST LANDS



# REAL ESTATE

---



2600 Cordova



In Thousands

\$20,000.0

\$18,000.0

\$16,000.0

\$14,000.0

\$12,000.0

\$10,000.0

\$8,000.0

\$6,000.0

\$4,000.0

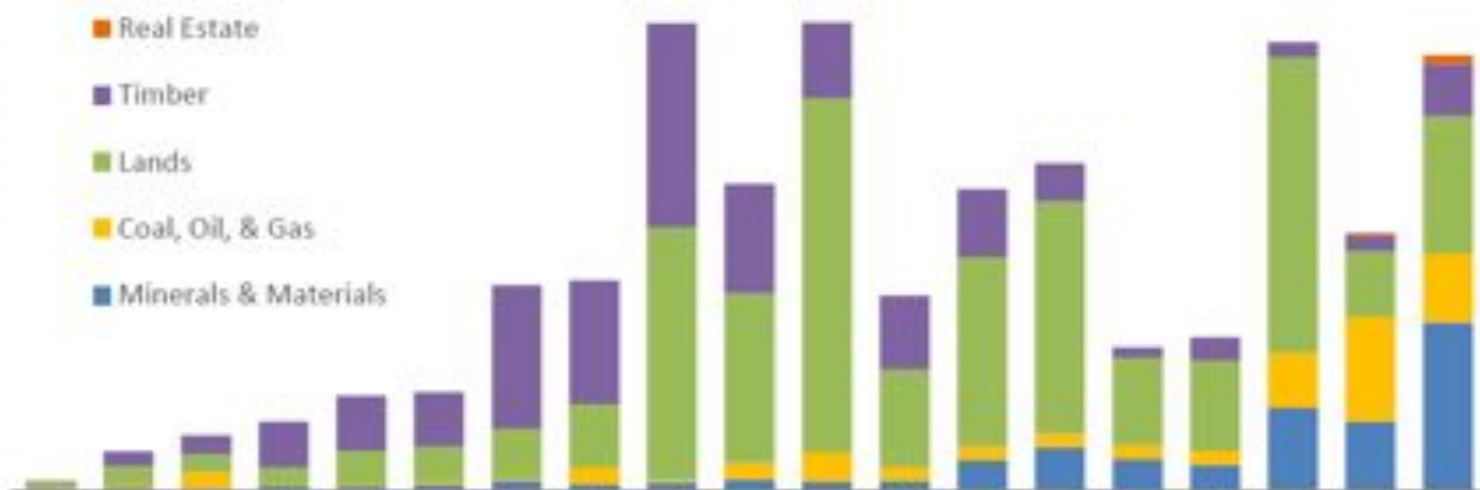
\$2,000.0

\$-

- Real Estate
- Timber
- Lands
- Coal, Oil, & Gas
- Minerals & Materials

Total Revenue Generated by TLO since Inception: \$157,300,000

FY95 FY96 FY97 FY98 FY99 FY00 FY01 FY02 FY03 FY04 FY05 FY06 FY07 FY08 FY09 FY10 FY11 FY12 FY13



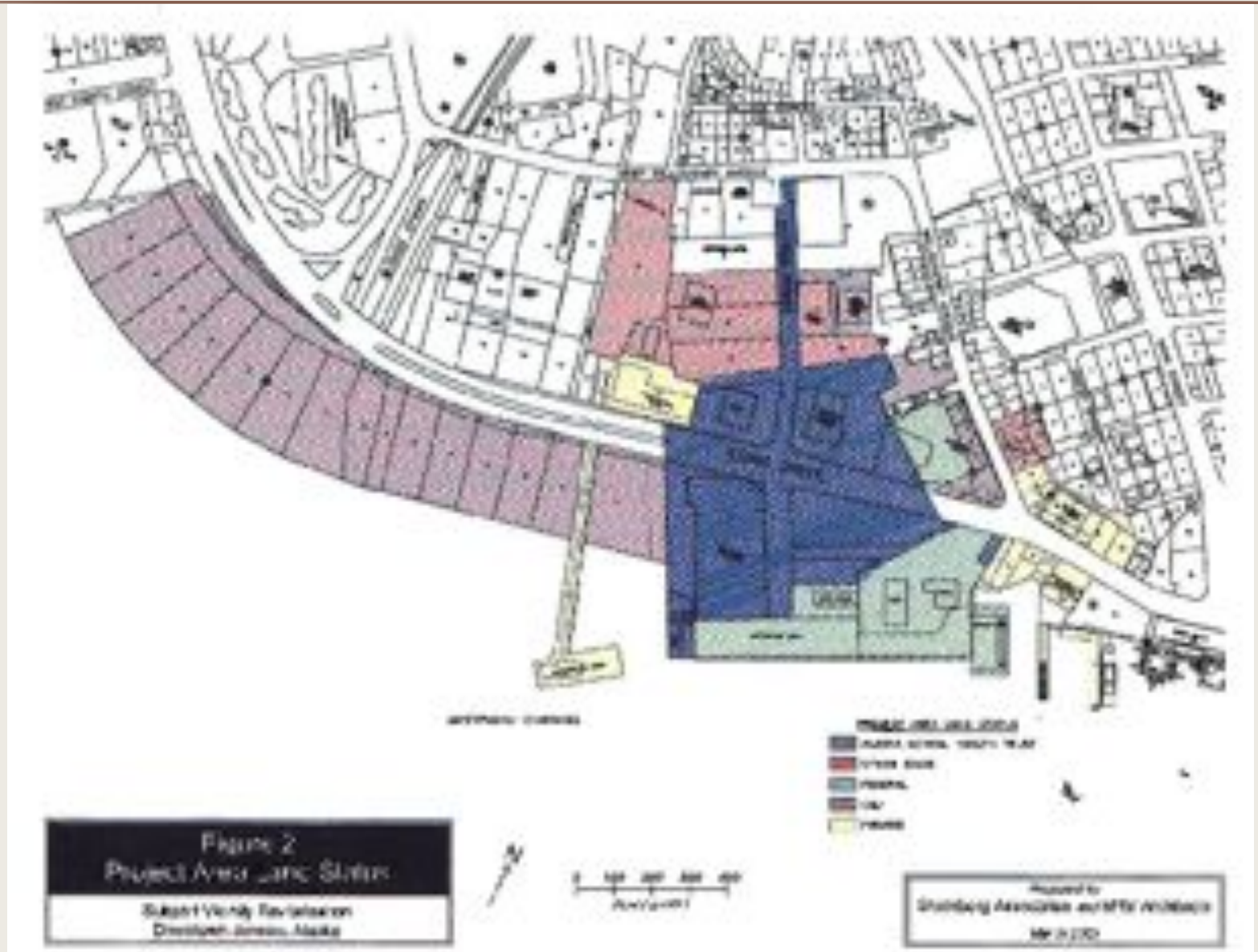
## PUBLIC RECREATIONAL USE ON TRUST LAND POLICY

The public use of Trust land for hunting, fishing, and other recreational activities is allowed under the following conditions. All activities must be:

- ❖ day use only;
- ❖ non-commercial;
- ❖ non-motorized; and
- ❖ in compliance with applicable state, federal, and local laws.

All other activities may require written permission. The Trust Land Office reserves the right to close Trust land to public use at any time;

# ORIGINAL WILLOUGHBY DISTRICT LAYOUT



WILLOUGHBY DISTRICT  
PARCELS



# SUPPORT OFFICE BUILDING CONCEPT 2009



# SUPPORT OFFICE BUILDING CONCEPT



# EMERALD SUBDIVISION

Tract 2 – 30.64 acres  
Tract CH-4 – 10.2 acres



# GLACIER HIGHWAY @ DOTPF

29.79 ACRES  
ZONED D-5



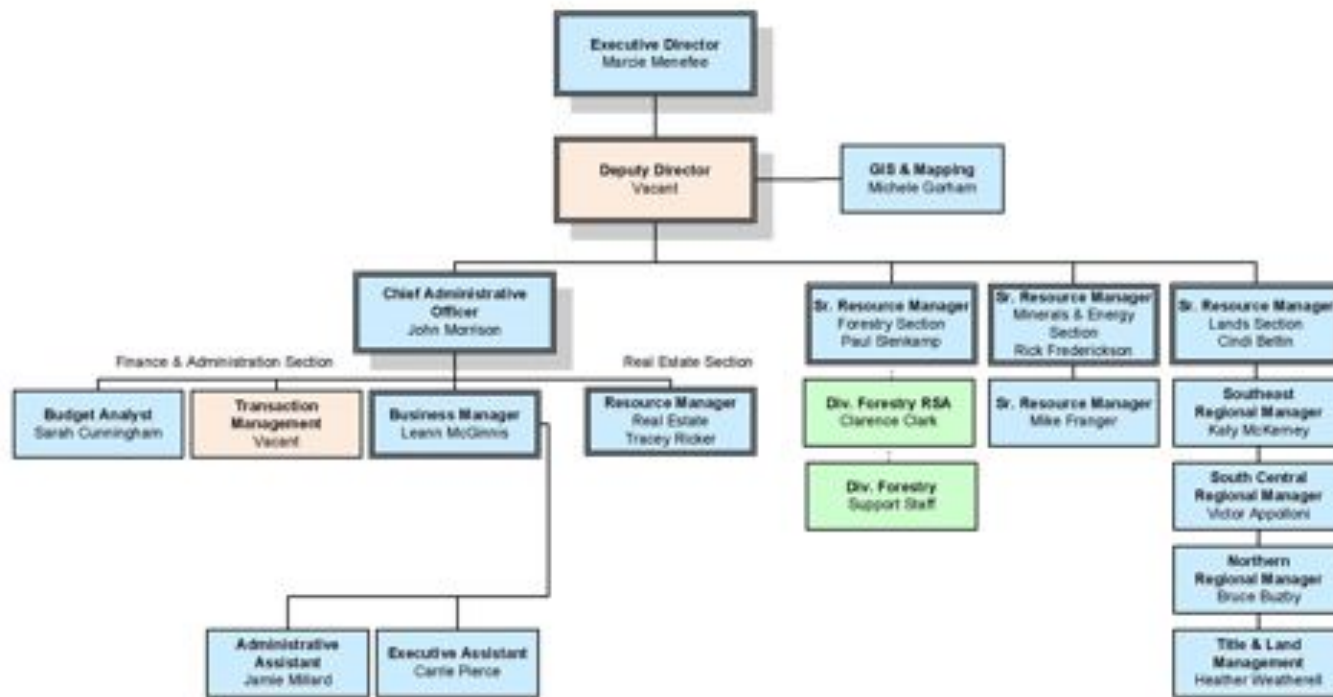


# CHANNEL VISTA

10.34 acres  
Zoning D-5



# TRUST LAND OFFICE ORG CHART



October 10, 2013

# QUESTIONS

---

**Trust Land Office**  
**2600 Cordova Street, Suite 100**  
**Anchorage, AK 99503**

**Phone: (907) 269-8658**

**Fax (907) 269-8905**

**Email: [mhtlo@alaska.gov](mailto:mhtlo@alaska.gov)**

**Web Site: [www.mhtrustland.org](http://www.mhtrustland.org)**